

THE

PITTSBURGH PULSE



VOLUME 20, NUMBER 2, JUNE 2006

NEWSLETTER OF THE PITTSBURGH REGIONAL CHAPTER, MEDICAL LIBRARY ASSOCIATION, INC.

From the Chair...

We're on a roll! Our Past Chair, Charlie Wessel, set us on a trajectory to achieve our overarching goal of improved responsiveness to all of our members, with a special focus on the needs of hospital librarians. This work will continue in the coming year with efforts to expand membership and energize participation.



Andrea Ketchum

Membership initiatives set in motion last year are the foundation for future success. This year, we will continue to examine membership levels to ensure that (1) Retired members are recognized and honored for their continuing contributions to our profession, and (2) Students are encouraged to join and contribute fresh ideas and faces. David Brennan's survey of MLA chapters nationwide gave us a fresh perspective on our structure as well as a view of how other chapters use membership levels to encourage participation. Watch for more information on this topic in the fall.

The Scholarship and Awards Committee under Ellen Detlefsen has completed work on a revitalized scholarship program for Chapter members. The board has approved two new Eakin/Shapiro Scholarships of \$250 each, which will be awarded at the Spring Annual Meeting, one to a student pursuing a career as a medical librarian, and one to a member who wishes to apply it to a CE activity. Applications will be due by March 1, so start thinking about that CE that sounded so interesting!

One easy way to become involved in our chapter is to volunteer to help with a CE program. Various tasks include hosting, publicity, producing handouts, ordering food – each small in itself, but absolutely critical to the success of the program. Jan Petrak, our new Program Chair, is already working on ideas for new CE classes, so please contact her to offer your help! Attendance at our CE programs has been increasing, with more interest

from non-member librarians (both in-state and out-of-state) – a trend we'd like to see continue!

Also, look for a few surveys as we try to better assess the needs of our members in order to offer pertinent and timely CE programs. For example, last year I was excited about the prospect of presenting a CE class on information technology in hospital libraries (from a realistic viewpoint!) but I realized that we simply do not have a good picture of what technologies exist in our members' hospital libraries, and thus could not begin to tailor the class to meet our needs. The more we understand about your library, the better we can serve you.

This is your MLA chapter! Let us know what you want, what you need, your successes, your experiments! The more responsive we can be to all members, the stronger we will be as a chapter.

**Andrea Ketchum, Chair
Pittsburgh Regional Chapter**

Inside this Issue

Eakin / Shapiro Awards	2
Annual Meeting and Spring CE	2
Vital Signs: Pat Weiss	3
TechLine: Managing a Reshelving Project	4
Stethoscoop	6
A New Beginning	9
Secretary's Corner: CE	10
MLA Chapter Council	11
Feel the Heat: MLA 2006	12

Eakin / Shapiro Scholarships

By Ellen Detlefsen, University of Pittsburgh, School of Information Sciences

At the annual meeting on March 31, the Pittsburgh Regional Chapter of the Medical Library Association voted to revise its existing scholarship program, and moved to establish two awards, to be named the Eakin/Shapiro Scholarships. These scholarships honor Laurabelle Eakin and Ruth Shapiro, two of the Chapter's distinguished early members. Funding for the awards comes from donations made to honor these two wonderful colleagues. You can donate to the Chapter scholarship fund at any time; contributions are especially easy when renewing your Chapter membership!

Two awards of \$250 each will be granted annually to two individuals, with one chosen from each of two categories:

1. A student enrolled in the ALA-accredited master's degree program at either the University of Pittsburgh or at Clarion University, who is preparing for a professional career in medical librarianship.
2. A member in good standing of the Pittsburgh Regional Chapter of the Medical Library Association who plans to participate in a continuing education activity

Applicants for these annual awards should submit a letter of application and a resume by March 1. Members of the Chapter's Scholarship and Awards Committee will select the awardees with review and ratification by the Chapter Executive Board. The Eakin/Shapiro Scholarships will be awarded, and checks and certificates presented to the awardees, at the Chapter's annual meeting in the spring. The Chapter reserves the right not to award either scholarship in the event that no appropriate applicant is identified or if there are insufficient funds in the Chapter Treasury.

This effort was spearheaded by the Chapter's 2005-06 Scholarship and Awards Committee: Ellen Detlefsen, Cindy Robertson Koval, Jan Petrak, Ammon Ripple, and Bill Suvak.

Annual Meeting and Spring CE Event

UPMC McKeesport Hospital - March 31, 2006



Ellen Detlefsen, MLA 2005-06 President M.J. Tooley, & CE Presenter Ann McKibbon



CE Host Karen Zundel, Past Chair Charlie Wessel, Honoree Nancy Spears, & Rosemary Panichella



New Chapter Officers: Treasurer Joni Melnick, Chair Andrea Ketchum, & Program Chair Jan Petrak



Pulse Contributors David Brennan & Marcy Brown

Vital Signs: Pat Weiss

By Marcy Brown, The Western Pennsylvania Hospital – Forbes Regional Campus

Pat Weiss is from “everywhere and nowhere,” listens to NPR throughout her day, and is the proud possessor of a real lemon of a crystal ball. With an undergraduate major in American Studies, a first career in educational media production, and a second as a stay-at-home mom, Pat

certainly took the circuitous route to medical librarianship! Yet now that she’s here – in both Pittsburgh and the profession – Pat is enjoying herself immensely and plans to stay a while.

Pat lives in the city itself, as it seems to her a “real place” like the Detroit of her childhood. She was born in Detroit, spent her adolescence in Philadelphia, went to college in Massachusetts, and then lived in Chapel Hill until her move to Pittsburgh in 1996. (Interestingly, Pat’s father grew up in Uniontown. She sports a theory that most Americans have some connection to Western Pennsylvania.) While in Chapel Hill in the early 90s, she developed an interest in databases, HTML, and other “new” technologies. A few information science courses at the University of North Carolina (UNC) eventually turned into an MLIS completed at Pitt. Pat’s earlier position as an educational media specialist at UNC was in the medical school, so she was familiar with and interested in health sciences media and information. She had also worked in Duke University’s research support office and in the Health Sciences Office of Research at Pitt, so medical librarianship seemed a natural choice. Pat has been a librarian for eight years now, entirely within the Health Sciences Library System.

She enjoys reference, information technology, and opportunities to interact with colleagues both at Pitt and around the world. “Learning on the job,” Pat asserts, “is part of the work I do every day.” This state of constant learning keeps her interested in her position and in medical librarianship in general. Last year, Pat coordinated the Pittsburgh showing of the

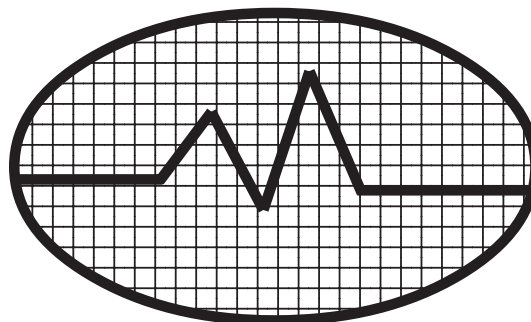


Pat Weiss

NLM-sponsored traveling exhibit *Changing the Face of Medicine*. Her ongoing interest in American social and cultural history (remember the American Studies major?) made her a natural fit to coordinate the project. The multimedia exhibit celebrates the lives and achievements of women in medicine. According to Pat, the exhibit tells “diverse stories and gives glimpses” of very different times in American medicine.

Pat’s reading interests are in the same vein. She appreciates both fictional and non-fictional stories of ordinary folks who find themselves in extraordinary circumstances. She finds immigrant fiction particularly enjoyable, and listens to audio books while walking or on car trips. Although Pat loves going to the movies, she does so only very rarely. She’s “not really a sports person,” which is unfortunate considering her stints in basketball-crazy North Carolina and her current home in the Steel City. Pat has a slight interest in baseball, dating back to the Detroit Tigers’ run for the American League pennant in 1962.

Pat claims that the warranty on her crystal ball has expired, so she hesitates to predict where she will be in five years. However, she enjoys her work so much that she hopes to be doing the 2011 equivalent of what she’s doing now, and possibly even for much longer than that!



TechLine: Managing a Reshelving/Collection Relocation Project: The Integrated Shelflist

By David Brennan, Barbour Library, Pittsburgh Theological Seminary

One of the most difficult things about a renovation project is relocating a collection. It might seem easy – pack it up, unpack it the same way. But it is rarely that simple. For example, we were renovating a special collections area that was so tightly packed that an “overflow” section for the same collection was also part of the move. These materials were packed and sent to the Iron Mountain storage facility during the reconstruction part of the project. Additional items from that collection were in varying stages of cataloging and processing and scattered throughout the technical services office. These stayed in the building and were processed while construction proceeded.

How could we easily merge these three groups of materials that needed to be reshelved in a single collection? There were two sources of data available:

1. The shelflist report run from our system (Innovative Interfaces - III).

This report contained everything that the system thought should be in the Anderson collection, regardless of its actual physical location. This report also contained missing items, duplicate records, and records for “boundwith” items (physical items composed of multiple bibliographic items). Adding to the complication, boundwiths result in multiple item records/barcodes per physical item, but Iron Mountain only scanned one code at shipment.

2. The report of materials sent to Iron Mountain. We wanted to group these materials into Anderson Regular and Anderson Overflow, so the two pieces of the collection would be distinct. This

didn’t happen in practice, so we ran a sub-report against the system to determine the “break point” by call number (where the Anderson scanned list ended at Z and picked up again at A). We then flagged the second A-Z group as “overflow.” This report also contained the box numbers for each item so that during retrieval we could specify which boxes were to be returned at which time.

Merging these two sets of data presented a problem. We needed a shelflist order report that contained the barcode, box number, and basic bibliographic information (call number, author, title, copy, volume) for each item in the collection. This report would enable us to interfile the overflow that remained in the building with the bulk of the collection. We also discovered missing and duplicate records that could be cleaned up after completing reshelving.

The III system could not easily handle producing this list. We could import the scanned file from Iron Mountain into a list within III and use rapid update to add some sort of flag to the record, but there was no easy way to attach the Iron Mountain box numbers to the system records without designing, testing, and debugging an import specification for what was essentially a “one-shot” process. Since it would also present clean up problems after the project, we ruled out using the system.

We finally decided to use Excel to generate the reports and Access to merge the two data files. We started with the shelflist report from the system for the location Anderson Room (Figure 1) and the Iron Mountain report (Figure 2).

Continued on Page 5

Figure 1

BARCODE	CALL # (ITEM)	AUTHOR	TITLE
35206003600048	BR145 MB 1797	Milner, Joseph, 1744-1797.	The history of the Church of Christ, by
35206000135089	BR145 MB 1797	Mosheim, Johann Lorenz, 1694?-1755.	An ecclesiastical history, ancient and m
35206000135087	BR145 MB 1797	Mosheim, Johann Lorenz, 1694?-1755.	An ecclesiastical history, ancient and m
35206000135105	BR145 MB 1797	Mosheim, Johann Lorenz, 1694?-1755.	An ecclesiastical history, ancient and m

Figure 2

Field1	Barcode	Field3	Field4	Field5	IM Barcode	Field7	Flag
244PS	340588859	ANDERSON	REGULAR SIZE	7	35206000108565	6/1/2005	
244PS	340588859	ANDERSON	REGULAR SIZE	8	35206003633629	6/1/2005	
244PS	340588859	ANDERSON	REGULAR SIZE	9	35206000157935	6/1/2005	
244PS	340588860	ANDERSON	REGULAR SIZE	1	35206001618055	6/1/2005	overflow

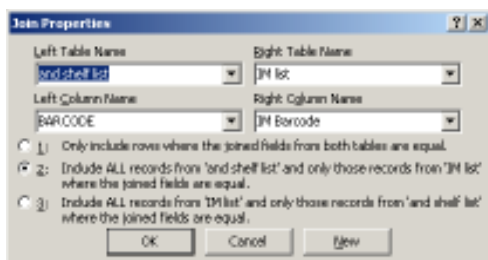
TechLine *Continued from Page 4*

We passed both reports through Excel. It was important to sort the shelflist report *before* exporting from the system, since Excel has trouble with LC call numbers. The Iron Mountain reports were already in the correct format, and the regular and overflow sets previously defined were merged to a single file. The export from the III system was delimited, imported to Excel, and formatted. Both files were then imported into Access tables. The two keys to performing the data merge were:

1. Establishing a referential link between the two tables using the barcode number:



2. Establishing the query relationship:



It is very important to make sure the query returns *all* the records from the system shelflist as well as those that match from the Iron Mountain scan report, since the resulting shelflist will have *everything* that the system thinks should be there, whether it left the building or not. In theory, anything moved to Iron Mountain should have a record in the system and thus be reflected on the final report, but in practice, we have run across a few items that were scanned by Iron Mountain and removed but did

not have a record in the system. Fortunately, these cases were easily recognized when found and were set aside to have records created later.

The result of the merge was a unified list that served as our working list (Figure 3). The procedure was then to retrieve the overflow items, and make one pass through the report, interfiling items in a staging area with the materials still in the building. Then retrieve the regular collection and unpack moving down the list. When an item is found that has no Iron Mountain box number, it is either a boundwith (in Figure 3, all the items with the BR145 .M8 1797 call number are contained in the physical item with the 35206003600048 barcode in box 340581324 and are checked off the list during the unpacking process) or an overflow item, or something that was retained in the building. Those are retrieved from the staging area and interfiled on the working truck before it moves to the final shelving area. The only thing the staff have to worry about is matching barcodes, since the system shelflist is already in call number order.

Even with this preparation, there are problems, mostly with bad records or if the physical item has boundwiths that were not barcoded, but this has been less than a few percent of the total. We use a colored flag structure to flag items that need later attention. They are still shelved where they belong so that we can keep moving with the retrieval process. This type of structure can be applied equally well to other collection merges, and certainly should be considered for any project involving more than a few hundred items.

Figure 3

Box #	BARCODE	Iron Mountain Barcode	CALL # (ITEM)	AUTHOR	TITLE	Flag
340581324	35206003600048	35206003600048	BR145 .M8 1797	Milner, Joseph, 1744-1797.	The history of the Church of Christ, by	
	35206000135089		BR145 .M8 1797	Moshelm, Johann Lorenz, 1694?-1755.	An ecclesiastical history, ancient and m	
	35206000135097		BR145 .M8 1797	Moshelm, Johann Lorenz, 1694?-1755.	An ecclesiastical history, ancient and m	
	35206000135105		BR145 .M8 1797	Moshelm, Johann Lorenz, 1694?-1755.	An ecclesiastical history, ancient and m	
	35206000135113		BR145 .M8 1797	Moshelm, Johann Lorenz, 1694?-1755.	An ecclesiastical history, ancient and m	
	35206000135121		BR145 .M8 1797	Moshelm, Johann Lorenz, 1694?-1755.	An ecclesiastical history, ancient and m	
	35206000135139		BR145 .M8 1797	Moshelm, Johann Lorenz, 1694?-1755.	An ecclesiastical history, ancient and m	
340589971	35206003420702	35206003420702	BR145 .M81 1790	Moshelm, Johann Lorenz, 1694?-1755.	An ecclesiastical history, ancient and m	overflow
340589971	35206003420694	35206003420694	BR145 .M81 1790	Moshelm, Johann Lorenz, 1694?-1755.	An ecclesiastical history, ancient and m	overflow
340589971	35206003420686	35206003420686	BR145 .M81 1790	Moshelm, Johann Lorenz, 1694?-1755.	An ecclesiastical history, ancient and m	overflow

Stethoscoop

By Marilyn Daniels, Latrobe Hospital, part of Excelsa Health

- ◆ Deepest sympathies go to **ANDREA KETCHUM** Health Sciences Library System (HSLs), University of Pittsburgh, and current chair of the Pittsburgh Regional Chapter. Andrea's mother, Eve F. Matthews, 81, of Mansfield, OH, passed away on Sunday, May 21, 2006, after a long illness. Those wishing to extend sympathy to Andrea can contact her at 19 Thornwood Drive, Pittsburgh, PA 15228, where she lives with her husband Carl and two sons, Matthew and Chandler. Contributions can be sent to the National Parkinson Foundation at www.parkinson.org.
- ◆ When **CINDY ROBERTSON KOVAL** sent her information to me so that I could write a piece about her resignation, she instructed me to put my "magic touch on it and make it sparkle." From my perspective, there is no magic needed. I could not say it any better than she has already done (*See "A New Beginning" on page 9*). I will miss her expert capabilities, her always-valuable advice, her honest compassion, and her dauntless courage, and in that, I know I am not alone. Not only was Cindy my long-time predecessor in writing this column, but she also introduced me to one of my favorite foods—Caesar salad. I truly hope that this change will give her more time for the things she enjoys the most, including more time to spend with those of us who consider her our confidante and friend.
- ◆ In Girard, OH, **LEANN RESTAINO** and her husband Vito, who owns his own computer consulting business, rang in the New Year a bit later than usual this year when Isabella "Bella" Rose Restaino arrived on January 18. Born at Forum Health in Boardman, OH, she weighed in at eight pounds exactly and 19 ½ inches long. Bella's dark brown eyes, black hair, and winsome ways proved to be too tempting for Leann, who resigned her position at Jameson Health System at the end of March to become a stay-at-home mom. She will still be consulting for Sharon Regional Health System and hopes to



Isabella "Bella" Restaino

work some creative writing into the mix. Her new "boss" Bella promises to stimulate her imagination, providing her with possibilities (and photo ops) galore. In turn, Bella will undoubtedly benefit from having a mom whose bonding techniques are sure to include books. In fact, she is already enjoying baby story times at their local public library. Bella is their youngest attendee! Leann's new email address is leann.restaino@gmail.com.

- ◆ The reference desk at Falk Library will be suffering a double blow this summer. After 18 years of service, reference librarian **ALICE KULLER** is retiring from the Health Sciences Library System (HSLs) at the University of Pittsburgh on June 30, 2006. However, that job title barely covers the many hats Alice wore during that time period. Serving more than a decade as a clinical medical librarian for the Division of General Internal Medicine, Alice has also been the library liaison to the School of Pharmacy since 1995. In recent years, Alice assisted the University's Institutional Animal Care and Use Committee (IACUC) by performing database searches required by the U.S. Department of Agriculture (USDA) and presented a poster session at the 2002 Dallas meeting of the Medical Library Association (MLA) on her liaison service. For nearly nine years, she coordinated the HSLs open house events for the new medicine, pharmacy and dental medicine students. Along with other HSLs librarians, Alice worked to support the School of Medicine's two-week course "Introduction to Being a Physician," designed to introduce first-year students to typical problems that exemplify the patient-doctor relationship. Add to that service on the Staff Development Committee from 1999-2003, including a two-year stint as co-chair, and you begin to recognize her versatility. Prior to her HSLs service, Alice was the medical librarian at the former Harmarville Rehabilitation Center from the mid-1970s through 1985.

Continued on Page 7

Stethoscoop *Continued from Page 6*

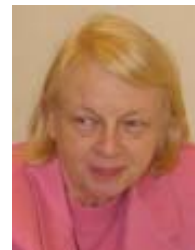
During her tenure, Alice contributed to four peer-reviewed publications including a 1993 *Bulletin of the Medical Library Association* article entitled “Quality Filtering of the Clinical Literature by Librarians and Physicians,” for which she was the lead author. In addition to her poster session in Dallas, she has three additional MLA poster sessions to her credit, covering topics such as orientation, academic library staff development and electronic access. A fifth poster session on marketing to IACUC was accepted for 2006 but not presented.

A Faculty Assembly member from 1999-2005, Alice has also been an active member of the University of Pittsburgh’s Senate Council from 2000-2004. She served four years on the Senate Committee for Elections, chairing the committee for one year in 2004. As current secretary and former co-chair, Alice has also played a role on the Senate Bylaws and Procedures Committee since 2003 and was just re-elected for a second three-year term in April of this year.

Like her roles at the University, Alice’s influential roles in the Pittsburgh Regional Chapter for the past 30 years have demonstrated her diversity and ingenuity. Ever gracious, Alice has served as secretary, program chair/chair elect, chair, chapter council representative, and bylaws chair. In 1995, she received the Chapter’s Achievement Award for her role as a leader and mentor, and in 1998-99, she was the Pittsburgh Medical Library Association “Librarian of the Year.”

Undoubtedly, the chapter’s loss will be her family’s gain as Alice hopes to spend more time with her loved ones, including her six granddaughters—a.k.a., the “Cousin’s Club.” Although her husband Lew (Lewis Kuller, MD, DrPH, professor and past chair of the department of epidemiology at the Graduate School of Public Health and nationally recognized expert in cardiovascular disease) is not retiring at this time, Alice is looking forward to the flexibility that retirement will give her, enabling her to spend more time traveling, entertaining friends and enjoying her many cultural and culinary interests. Courses at Pitt and Carnegie Mellon University will most assuredly be in the offing. (Written with material collected for an upcoming *HSLs Update* by Nancy Tannery)

- ◆ June 30, 2006, will also mark the end of Scottsdale native **JUNE BANDEMER**’s career with the Health Sciences Library System (HSLs) at the University of Pittsburgh, where she began as an acquisitions librarian in 1966 after receiving her MLS from Pitt’s School of Library and Information Sciences (SLIS). Along the way, the current reference librarian has held various positions including acting director and assistant director for Falk Library, and coordinator of library services for the Graduate School of Public Health. She attended one of the early four-month classes in indexing of the medical literature and searching the MEDLARS system offered at the National Library of Medicine in 1970 and ’71. She also was selected for a yearlong internship, sponsored by the Council on Library Resources and the National Library of Medicine, to prepare qualified librarians for director-level positions in academic health sciences libraries. Under the direction of C.K. Huang, Director, Health Sciences Library, State University of New York at Buffalo, June’s internship ran from September 1979 to August 1980.
- Not one to stop with her MLS alone, June, a long-standing member of Beta Phi Mu, the international library and information studies honor society, received her 26-credit advanced certificate in library and information science and has taken an additional 30 credits in information science. She twice taught the course, “L.S. 237: Medical Literature and Libraries” in the mid- and late-seventies at SLIS.



June Bandemer

Additionally, June’s involvement with the university-at-large has spanned several decades, extending her influence beyond the walls of the library. Her activities have included the Institutional Review Board for Psychosocial Research as well as the C. F. Reynolds Medical History Society, a membership that began in 1980, and the Center for Medical Ethics, a membership that began in 1988. Her commitment to these interests continues to the present day.

Continued on Page 8

Stethoscoop *Continued from Page 7*

As if that did not keep her busy enough, the Westminster College graduate attended the Duquesne University School of Law, where she received her Juris Doctor in 1983 and was admitted to the Pennsylvania Bar on November 7, 1984. To this day, she is a member of the Allegheny County Bar Association.

A distinguished member of the Medical Library Association's Academy of Health Information Professionals since 1990, June has served as regional legislation chairman, chapter council representative and chapter council alternate for the Pittsburgh Regional Chapter of the Medical Library Association at various times since she became a member nearly 40 years ago.

Not that June is an all-work, no-play kind of person! She is a lay reader for the Episcopal faith Church of the Ascension. An enthusiastic traveler, who has visited Austria, England, Germany, Israel, Italy and Scotland as well as countless United States locales, June also enjoys opera, the ballet, concerts and some plays. Even so, her favorite places are art museums. That's why it is no wonder that June sees retirement as a "big adventure."

June also sees it this way, "It has been a privilege to be a librarian at Falk Library. It has been good to see the growth and development of the Health Sciences Library System. I appreciate all my colleagues and will miss seeing all of them on a daily basis. I will miss the many interesting users whom I have served and will miss my colleagues in the medical library community." But, never fear! Always the consummate professional, June plans to keep her chapter membership, and we might even see her at a future meeting or two.

◆ Swissvale, PA. For some of us, Swissvale is simply the exit on the parkway that we take to get to Kennywood. For **MELISSA RATAJESKI**, Swissvale means a whole lot more. Melissa readily admits that she grew up in the Carnegie Free Library of Swissvale, her local



Melissa Ratajeski

branch. She attended their preschool classes, summer reading programs and craft classes while reading her way through most of their children's collection. (Her favorites were from the *Nancy Drew* series.) She worked as a library aide at the Swissvale branch throughout college and is still currently employed there as a part-time substitute. She also currently substitutes at the Carnegie Library of Homestead. Is it any wonder then that she decided to go back to the University of Pittsburgh to earn her MLIS, which she completed via the FastTrack program (<http://fasttrack.sis.pitt.edu/>) in April 2006?

Melissa attributes the fact that she specialized in the medical track to her interest in anything and everything related to science. A 2001 graduate of Pitt, Melissa received her BS in biological sciences and psychology. Fascinated with animal behavior, she interned at the Pittsburgh Zoo, the National Aviary and the Pennsylvania Wildlife Center during her undergraduate career.

Continued on Page 9

Share Your News with the Chapter via Stethoscoop!

Here's How - Contact Marilyn Daniels, Stethoscoop Editor via:

Email: mdaniels@excelahealth.org

Phone: 724-537-1275

Fax: 724-537-1890

Marilyn Daniels
Manager, Library Services
Excela Health
121 West Second Avenue
Latrobe, PA 15650-1096

Please include your news item, name, business address, and phone number.

A New Beginning

By Cindy Robertson Koval, Heritage Valley Health System

Due to the recent loss of my husband John on March 25, 2006, I have had to make some difficult decisions. Tri-State Electronics, Inc., in Weirton, WV, was owned and operated by John for 48 years. It was his wish that the business remain open to carry on the sales and service his customers rely on as well as to provide a source of income for five loyal employees and their families. To that end, I have resigned my position as manager of library services and CME at Heritage Valley Health System and will be assuming the role of president of Tri-State Electronics, Inc. Trying to work both places for the past two months has proven to be more than I can handle right now. I have chosen to leave the library field that has

served me so well for the past 20 years and venture into the world of small business.

While I am looking forward to the new adventures and challenges awaiting me, I will greatly miss my colleagues and friends at HVHS and the Pittsburgh Chapter of MLA. As we all know, librarians are the greatest, and I am so very grateful for the help, encouragement, support and friendship you have shown me over the years.

My last day at HVHS was June 2, 2006, and my home email is lucindawv@comcast.net. Thanks to all for the wonderful memories and wishing everyone a peaceful mind and joyous spirit in all you do!

Stethoscoop *Continued from Page 8*

Upon graduation, she took a research job at Pitt's School of Medicine, working in the neurobiology department as a research assistant. It was during that time that she fast-tracked her way to her degree at SIS. Still currently working in the laboratory of Peter L. Strick, PhD, Co-Director of the Center for Neural Basis of Cognition, Melissa has changed positions from a research assistant to a research coordinator, which gives her a more administrative role. With a backyard that doubles as Edgewood's track, baseball field, and basketball courts, she lives on the second floor of the borough's field house with her husband Mark, an emergency services employee whose responsibilities run from responding to local fire calls to compiling criminal activity reports. Ever the animal-lover, even in an apartment setting, Melissa confines her pets to fresh water fish—mollies, albino catfish and blind cave fish—and snails.

THE PITTSBURGH PULSE

Newsletter of the Pittsburgh Regional Chapter
of the Medical Library Association
Volume 20, Issue 2
June 2006

Editor David Nolfi
Technology Editor David Brennan
Stethoscoop Editor Marilyn Daniels
Vital Signs Editor Marcy Brown
Proofreader Therese Nolfi

THE NEXT ISSUE WILL BE PUBLISHED SEPTEMBER 5, 2006
DEADLINE TO SUBMIT ARTICLES IS AUGUST 23, 2006

Mail: David Nolfi
Health Sciences Librarian
The Gumberg Library
Duquesne University
Pittsburgh, PA 15282

Phone: 412-396-4931, Fax: 412-396-5350

Email: nolfi@library.duq.edu

Secretary's Corner: CE – Affordable, Available, and Attractive

By Debbie Downey, Chapter Secretary, UPMC Shadyside Libraries

As we go to press with this edition of the *Pulse*, another MLA Annual Meeting is history but many Pittsburgh Chapter members were able to attend the conference and the quality continuing education courses offered. Courses covered a number of different topics including: health sciences environment and services, information services and resource management; information systems and technology; instructional support systems; and research analysis and interpretation.

Such a broad array of subjects provided conference attendees a multitude of choices including one class — “Number, Number Who’s Got the Number or, Who’s Counting: Health Statistics Sources” taught by Pittsburgh MLA chapter members Charlie Wessel and Nancy Tannery. If for one reason or another you were not able to attend this year’s conference, keep in mind the CE sessions offered locally by our Chapter. This past spring, the Chapter sponsored, “Understanding Nursing Literature: a Primer for Working with Evidence Based Health Care Principals” by Ann McKibbon. Our next CE program will be offered this fall. Stay tuned to our Web site and the next edition of the *Pulse* for the subject, location, date, time, and registration particulars.

If committing to travel or taking a day away from your library doesn’t sound feasible, I’d like to refresh your memory on the availability of two CE programs on DVD. These two programs—“Keeping Patients Safe” and “The Art and Practice of Electronic Journal, Book, and Database Licenses: Practical Tips

for Health Care Organizations” are available to borrow. For details on borrowing the DVDs and receiving CE credits contact Heidi Marshall at The Washington Hospital (hmarshall@washingtonhospital.org).

If you would like to share your ideas regarding continuing education and the direction our chapter should consider, please complete the Chapter Uniform Needs Assessment Continuing Education Survey

I can only generalize that I think it’s the salvation of medical librarianship...but I do know that they are essential to the continuation of the improvement of our profession.

Janet Doe, commenting on continuing education.¹

on our Web site (direct link: <http://pmhslibraries.org/pghmla/needsas.pdf>). Please print the survey, complete it, and mail it to our Program Chair:

Jan Petrak
 Excelsa Health Westmoreland Hospital
 532 West Pittsburgh Street
 Greensburg, PA 15601-2282
 Phone: 724-832-4087
 Fax: 724-832-4661
jpetrak@excelahealth.org

Remember, continuing education provides vitality and growth to each professional journey. You can also contact me at downeydj@upmc.edu with any comments or reflections regarding the subject of continuing education.

1. Brodman E. (1977, July 20). *Transcript of oral history with Janet Doe.*

<http://www.mlanet.org/education/>

MLA Chapter Council – A Memorable Experience

By Heidi Marshall, Chapter Council Alternate, The Washington Hospital

Let me begin by being honest with my readers. At first when I learned that I was going to have to spend my first Saturday in Phoenix attending Chapter Council I was devastated. I mean the thought of spending an entire Saturday shut away in a windowless room after the long flight from Pittsburgh was not anything that I felt I could approach with gusto. But, I have made a commitment to the Pittsburgh Chapter as your Chapter Council Alternate, and of course I could not let the Chapter members down.



Heidi Marshall

To be honest with you dear reader my thoughts as I took the last seat at the table that morning were rather negative. “Eight hours; what on earth will these people find to talk about for eight hours!?”

I am happy to report to you that I made the decision to buckle down, get through the day, try to learn something, and take a positive approach. The positive approach (as always) paid off. By the end of the first hour my enthusiasm was boundless! The morning hours were spent discussing the very pertinent topics of: Librarians without Borders; The Katrina Fund; medical librarians that are underserved, and last but not least online elections. I cannot say that we totally resolved any of these

issues. We would have needed eight days not eight hours to accomplish that, but the discussions were lively, and I gained a much clearer understanding of what these issues are.

The afternoon hours literally flew by as we discussed individual chapter issues and listened to reports from the chapter representatives. I listened to reports of activities such as high school recruitment into our profession; chapter blogging, and wikis.

However, the absolute best part of the day was the opportunity and the honor to cast my vote for Chapter Council President. I am happy to say that my candidate of choice won the election.

My day was not wasted. I actually enjoyed myself. Being part of Chapter Council provided me with the opportunity to meet medical library professionals from all over the country. I was honored to represent Pittsburgh and to be a part of a dedicated group of librarians. I now have a greater understanding of how MLA operates. The eight hours were enlightening and very well spent.

If you want further details of what we discussed I would love to answer your questions. Please contact me by phone or email. I will welcome the opportunity to share my newfound enthusiasm as a Chapter Council Alternate.



Feel the Heat! MLA 2006!



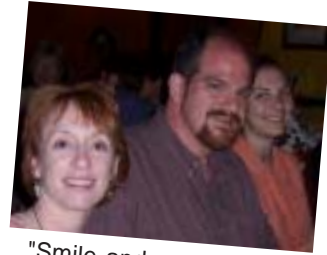
"Didn't you wear that last year in San Antonio?"
Ahlam Saleh & Charlie Wessel



"You mean you'll REALLY print this in the Pulse?!?"
Rebecca Abromitis & Jill Foust



Camelback Mountain
(photo by Rebecca Abromitis)



"Smile and say queso!"
Marcy Brown, David Nolfi, & Elizabeth LaRue
(photo by Rebecca Abromitis)



The Unofficial Mascot
of MLA '06



Phoenix Convention Center



"Get Down Tonight!"
Michele Klein-Fedyshin & Charlie Wessel
(photo by Rebecca Abromitis)

