

THE

PITTSBURGH PULSE



VOLUME 18, NUMBER 5, DECEMBER 2004

NEWSLETTER OF THE PITTSBURGH REGIONAL CHAPTER, MEDICAL LIBRARY ASSOCIATION, INC.

From the Chair...

As the holidays draw near, our thoughts turn to family and friends – and community. On September 29, 2004, our community of professionals that make up the Pittsburgh Chapter of MLA gathered to honor one of our own. Eighteen of us attended a retirement dinner for Peggy Trevanion at the Pittsburgh Athletic Association. Memories were shared as Peggy's many friends celebrated her years of service as the medical librarian at UPMC Passavant and her long involvement with the Chapter. A wonderful time was had by all as we recognized Peggy's accomplishments and wished her much joy in retirement. It is clear that deep friendships develop as medical librarians work together in their professional lives.

As with any community, change is inevitable as the Chapter evolves. Beginning in April 2005, the annual business meeting will now be held in the spring. This will facilitate the transition to new officers and will better correlate with the Chapter's working year. As always, I encourage you to attend and I welcome your involvement in Chapter activities.

On behalf of the Executive Board, I'd like to wish all of you a happy holiday season.

Christine Dietrick
Chapter Chair

Inside this Issue

| | |
|---|---|
| TechLine: The Chapter Listserv | 2 |
| More CE Events | 4 |
| It Was a Success: Fall CE Program | 5 |
| Stethoscoop | 6 |
| MLA's Leadership and Management Section | 7 |
| "DVD Event" Registration Form | 8 |

Mark Your Calendars!

Upcoming CE Events

By Charlie Wessel, Program Chair

January Chapter "DVD Event"

David Brennan and the Pittsburgh Regional Chapter will be hosting a January "DVD Event" at the Pittsburgh Theological Seminary's Clifford E. Barbour Library second floor seminar room <www.pts.edu/library.html>.

Join the Chapter for the "DVD Event," MLA's Satellite Teleconference "The Art and Practice of Electronic Journal, Book, and Database Licenses: Practical Tips for Health Care Organizations" along with a few slices of pizza! David Brennan will give a tour of the library after the event. Three MLA CE contact hours will be offered to participants.

The Pittsburgh Theological Seminary is easy to find. It is located on Highland Avenue in Pittsburgh's East Liberty/Highland Park neighborhood. Directions to the Campus are located at: <www.pts.edu/visit.html>, a Campus map is at: <www.barbourlibrary.org/images/Campus_map.jpg> and the Barbour Library map at: <www.barbourlibrary.org/maps/>.

This "DVD Event" will be held Wednesday, January 12, 2005, from 2 pm to 5 pm. The Pittsburgh Chapter has purchased the DVDs for this program, making the registration fee minimal. If the weather is too bad for travel on January 12, the snow date will be Wednesday January 19, 2005 at the same time. Participants will be notified by phone if the program is cancelled due to inclement weather. For more information and to register for the "DVD Event" go to the Pittsburgh Regional Chapter's web site at <<http://pmhslibraries.org/pghmla/>> (you can also register using the form on page 8). By completing the registration form, we will know what toppings Pittsburgh Chapter members like on their pizza!

Continued on page 4

TechLine: The Chapter Listserv - A Wealth of Features We Might Use

By David Brennan, Barbour Library, Pittsburgh Theological Seminary

Since I've been asked from time to time about the Chapter listserv and why it does (or does not do) certain functions, I thought that I should review it for everyone. Since April 2002, the listserv has been hosted at Yahoo! Groups. What I describe in this column should be considered neither an endorsement nor an indictment of Yahoo! Groups. Other hosting services have similar features and limitations. We can easily stay with Yahoo! indefinitely, or move to another service as the needs of the Chapter dictate.

Although the list has operated smoothly for the most part, there have been some difficulties primarily due to institutions that block traffic from Yahoo!. An additional problem occurs when an email address changes but I don't receive the notification needed in order to update the listserv. The final problem happens when an address bounces messages. Due to the low amount of traffic on our list, it is easy to be unaware that you are not receiving messages for one reason or another. Yahoo! will remove any address that consistently bounces for 6 months. Unfortunately, I am not notified that an address is bouncing, or when Yahoo! removes it.

Some delivery settings have been tweaked over time, primarily in the "Reply" setting, which originally replied to the entire group, and now replies to the sender only.

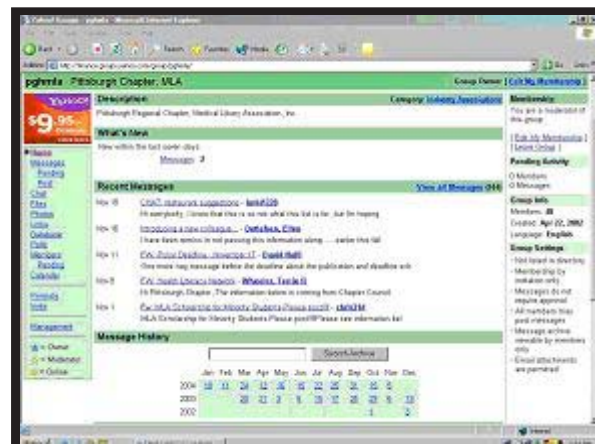
The main distinction of the Yahoo! Groups setup is that it is a hybrid. In addition to the traditional list service of delivering messages to a group of recipients and allowing posting by any member of the group, it also offers additional services to support group activities.

Accessing the additional features entails a bit of work by the list member as well as the list moderator. As the moderator, I can add a recipient to the list, who will then be able to receive and post messages, but unable to access the list's "website" until she creates a Yahoo! user ID and links it to the email address used to receive group messages. See an explanation of this process in the box at the top of the next column:

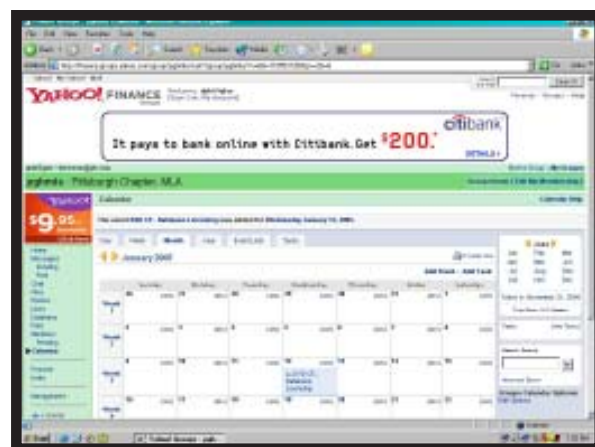
I received a notification to "complete my account?" What does this mean?

If you received a notification asking you to "complete your account," this means that the email address you've used to join the group is not currently connected to a Yahoo! ID. When you receive this email notification, click on the link provided, and you will be taken through a very simple and brief process of linking your email address to a Yahoo! ID. If you do not have a Yahoo! ID, you will be given the option to create one. By completing your account, you will have access to all your group's Web features (previous messages, photos, files, calendar, etc.) & easier control of your message delivery options. It's easy, fast & free!

The screen shots below show two of the website features: the Main List Screen and the Event Calendar.



Main List Screen



Event Calendar

TechLine

(continued)

Major group functions are shown below. At present, we only make use of the “Messages” and “Database” portions of the list (our “database” is a Chapter member directory). We also tested the “Polls” function as a possible means of electronic voting, which we may revisit now that MLA is moving in that direction (see *MLA News*, November/December 2004, Number 371).

| Yahoo! Groups Features | |
|---|---|
| <p><u>Messages</u></p> <ul style="list-style-type: none"> - Send and receive Yahoo! Groups messages | <p><u>Polls</u></p> <ul style="list-style-type: none"> - Vote and change your vote - Create, modify, and conclude polls |
| <p><u>Files</u></p> <ul style="list-style-type: none"> - Upload and download files - Organize files and folders - Auto-deliver files | <p><u>Calendar</u></p> <ul style="list-style-type: none"> - Schedule events - View the calendar - Set up reminders |
| <p><u>Chat</u></p> <ul style="list-style-type: none"> - View system requirements for using Chat on Yahoo! Groups | <p><u>Database</u></p> <ul style="list-style-type: none"> - Create custom tables and organize information |
| <p><u>Photos</u></p> <ul style="list-style-type: none"> - Add, edit, and remove photos - Work with albums - Control access and sharing | <p><u>Members</u></p> <ul style="list-style-type: none"> - View list of current group members - View member profiles |
| <p><u>Bookmarks</u></p> <ul style="list-style-type: none"> - Link to other web pages using bookmarks | <p><u>Management</u> (group owners/moderators only)</p> <ul style="list-style-type: none"> - Change the settings for your group |

Some of the list functionality duplicates what is already available from the Chapter website, such as the files, photos, and bookmarks sections. I don't think that there is much utility for us in the “Chat” function, although that might be investigated as a part of a journal club if real-time interactivity is desired. We also have not made much use of the “Calendar” section or its reminder capabilities for upcoming events.

Hopefully, this overview has answered some questions as well as raised some possibilities for increased use of the Chapter's listserv. Even though I'm the “moderator” of the list, I don't know all of the possibilities myself. If you have ideas or suggestions, please let me know and I will see if the list can accommodate them.

The URL for the web portion of the list is <<http://groups.yahoo.com/group/pghmla>> (and remember that you need a Yahoo! user ID to access it).

Finally, I'll be doing a major update to the list at the end of January 2005 as part of the annual membership renewal. Look for renewal notices after the holidays.

Best wishes for a safe and happy holiday season!



Mark Your Calendars! Upcoming CE Events

Continued from Page 1

“Apres-midi pause cafe” March CE Program

Plan to attend our Chapter’s two MLA CE contact hours afternoon coffee break program, “*Searching IndexCat for Historical Medical Literature*” with Chapter member, Ammon Ripple and Pittsburgh’s history of medicine expert, Jonathon Erlen, Ph.D. IndexCat is the database version of the Index-Catalogue of the Library of the Surgeon-General’s Office, 1860-1961, and includes records of books, chapters, articles, dissertations, government publications, obituaries, and portraits. This is the only database for searching pre-1950 medical literature. This program will be held at Falk Library of the Health Sciences, University of Pittsburgh in March 2005. Look for more specific information on this CE program in the next issue of the *Pulse* or via email.

Spring Meeting - CE & Annual Business Meeting

The Pittsburgh Regional Chapter’s spring meeting will convene on Friday April 15, 2005. Our host will be Ann Ferrari and the Jefferson Regional Medical Center <www.shhsph.org/>.

The day’s events will include a four MLA CE contact hours course called *Locating Psychological Testing Instruments for Use in Health and Mental Health Settings*. Ester Saghafi, a Chapter member and Reference Librarian at WPIC, is developing this course specifically for our Chapter.

Ester describes her course:

Psychological testing instruments are widely used in the health and mental health fields. Information on these instruments is usually hard to locate due to

existing misconceptions associated with the nature and availability of this type of information. This course is designed to give participants the knowledge and tools needed to successfully locate and retrieve information on psychological testing instruments used in health and mental health settings. The focus of the course will be on:

1. Making participants aware of the nature and availability of the existing testing information used in medical and mental health clinical/hospital settings.
2. Identifying the most appropriate print and electronic resources for this type of information.
3. Introducing database search strategies focused on finding this information.
4. Using library and industry online catalogs to locate in-house and other available resources on the topic.
5. Utilizing the Internet in locating information on psychological testing instruments used by health and mental health professionals.

Following the course, the Chapter’s annual business meeting will be held. We look forward to your participation in the business meeting.

Since the Chapter is sponsoring the development of this course, the registration fee will be minimal. Please watch this newsletter and your email for details about this upcoming event!



It Was a Success! Recognition & Kudos for the Fall Program

By Charlie Wessel, Program Chair

The Pittsburgh Regional Chapter, MLA would like to recognize the following organizations and individuals who made the October 29, 2004 Fall CE Program, *Running with the Squirrels: Providing Library Services to Hospital Administrators*, a success:

- **JEANNINE GLUCK** for her excellent instruction and course materials;
- **MDCONSULT** for its sponsorship and underwriting the breakfast;
- The **GUMBERG LIBRARY AND DUQUESNE UNIVERSITY** for hosting the program;
- **DR. LAVERNA M. SAUNDERS**, University Librarian, Duquesne University, for use of the conference room and help from her staff;
- **DR. EILEEN ZUNGOLO**, Dean and Professor, Duquesne University School of Nursing for her welcome and opening remarks;
- **DAVID NOLFI**, our host for the day's event and Duquesne University coordination;
- **BRUCE JOHNSTON**, for fitting us in the Gumberg Library conference room and his neat name badges and placards;
- **LISA SCIULLI** of the Gumberg Library for directional signs and help with catering;
- And to **ALL COURSE PARTICIPANTS** for their exchange of ideas and fellowship!



Western Psych Library's
Rebecca Abromitis & Barb Folb



Course Instructor Jeannine Gluck
& St. Clair Hospital's Bette Rembert



Falk Library's
June Bandemer



Washington
Hospital's
Heidi Marshall



Official CE Mascot



Gumberg Library



AGH's Deb Keene

Stethoscoop

By David Nolfi, Duquesne University

- ◆ Congratulations to UPMC McKeesport Hospital's **KAREN ZUNDEL**. NLM recognized her project, "An Intranet Page for Morning Report Follow-Up," as noteworthy as part of this year's National Medical Librarians Month. On behalf of the Chapter, we are proud of Karen's continued record of providing innovative services.
- ◆ The "Network Spotlight" in the September-October 2004 issue of *Middle Atlantic Perspectives* shined on **TERRIE WHEELER**, Program Manager of Library and Medical Media for the VA Pittsburgh Healthcare System. The article discusses Terrie's experiences in creating her hospital's first website as well as her leadership in adding digital functionality to the site. If you haven't seen the article yet, you can find it at <<http://nmlm.gov/mar/perspec/2004/0005.html>>.
- ◆ **WALTER SYLVANDER** has retired after many years of service as Librarian at the Torrance State Hospital in Blairsville. He was recently replaced by **JONI MELNICK**, who previously served as director of the Blairsville Public Library. Please join us in welcoming Joni to medical librarianship. You can reach her at <jmelnick@adelphia.net>.
- ◆ **MARCY BROWN**, medical librarian at the Forbes Regional Hospital, received one of the 2005 Hospital Libraries Section professional development awards. She plans to use the funds to attend a two-day workshop on serials cataloging. Marcy acknowledges that although the subject matter might not appeal to all medical librarians, she would like to increase her understanding of this important aspect of librarianship.
- ◆ As noted by our Chair, members of the Pittsburgh Chapter attended a retirement dinner for **PEGGY TREVANION** to honor her twenty-eight years of service to the profession and the Chapter. Thanks to **ELLEN DETLEFSEN** for hosting the event at the Pittsburgh Athletic Association.

**Until further notice, please send all news
for Stethoscoop to David Nolfi
<nolfi@library.duq.edu>**

Sad News for Pittsburgh Chapter Members

- ◆ *After a long illness, "Jeannie" Sakino, mother of the Children's Institute's NANCY SPEARS, passed away on August 30, 2004. She died at home surrounded by her beloved family and their pets. Our sympathy and thoughts go out to Nancy, her husband Bob, and her brother Mark Sakino.*
- ◆ *KAREN ZUNDEL, librarian at McKeesport Hospital, lost her husband, William R. Zundel, on November 2, 2004. His death was sudden and unexpected. Karen and her son Lee have our deepest sympathy during this most difficult time.*
- ◆ *CINDY ROBERTSON of the Medical Center at Beaver was one of the victims of September's flooding. She and her fiancé John experienced substantial damage to their houses, which were both on the market at the time. Our thoughts and prayers are with Cindy and John as they continue to rebuild in the aftermath of the flood.*

MLA's Leadership and Management Section: The Benefits of Membership

By Brian Bunnett, Leadership and Management Section Membership Committee

Certain problems are common to all medical librarians: how to keep skills current, finding a network of colleagues who can advise and support them, and determining a career path that offers opportunities for growth and advancement. Fortunately, MLA exists in order to help address these problems. And within MLA there is a flourishing system of sections that make this task even easier.

There are currently 23 different MLA sections. These sections draw like-minded colleagues together so that they can better pursue common interests. The broad range of sections – from medical informatics to collection development to dental and veterinary libraries – attests to the diversity and vitality of our profession. Membership in any one of these sections is certain to stimulate and benefit those who belong to them.

As a member of the Leadership and Management Section (LMS), I serve on the section's membership committee. Admittedly, this affiliation has perhaps clouded my objectivity, and it's not inconceivable that my partiality to the LMS has made me lose sight of the important work that is conducted within the other 22 sections. However, I think that you may find membership in the Leadership and Management Section to be especially appealing.

The LMS allows members to network with colleagues interested in leadership and management by promoting research and professional development activities. It accomplishes these goals through programs and symposia held at MLA annual meetings, an excellent newsletter, *The Leading Edge*, a listserv, and through social events and business meetings. A particularly valuable service provided by

the LMS is the identification and remediation of leadership and management problems in medical libraries. For example, a recent LMS survey found that the profession offered few training and educational opportunities for librarians wishing to become middle managers. In response to this finding, LMS created a task force to determine how the section can help fill this vacuum.

As mentioned at the outset, all librarians face the issue of determining a career path that offers opportunities for growth and advancement. Managerial and administrative positions are often exceedingly challenging and difficult. But such roles can also be fulfilling, rewarding, and stimulating in ways that other library positions are not. Chapter members interested in pursuing such a career path will find that joining the MLA's Leadership and Management Section will help realize your professional aspirations.

More information about the LMS is available on its web page at: www.lms.mlanet.org and an application is available at: www.lms.mlanet.org/join_us_form.html.



THE PITTSBURGH PULSE

Newsletter of the Pittsburgh Regional Chapter
of the Medical Library Association
Volume 18, Issue 5
December 2004

Editor David Nolfi
Technology Editor David Brennan
Proofreaders Tina Benedek
Bruce Johnston

*THE NEXT ISSUE WILL BE PUBLISHED MARCH 1, 2005
DEADLINE TO SUBMIT ARTICLES IS FEBRUARY 14, 2005*

Mail: David Nolfi
Health Sciences Librarian
The Gumberg Library
Duquesne University
Pittsburgh, PA 15282

Phone: 412-396-4931, Fax: 412-396-5350

Email: nolfi@library.duq.edu

Registration Form

Pittsburgh Regional Chapter, Medical Library Association
"DVD Event"

*The Art and Practice of Electronic Journal, Book, and Database Licenses:
Practical Tips for Health Care Organizations*

3.0 MLA CE Contact Hours

Pittsburgh Theological Seminary

Clifford E. Barbour Library

Wednesday January 12, 2005, 2 pm to 5 pm*

*Snow date will be Wednesday January 19, 2005, 2 pm to 5 pm. If the "DVD Event" is cancelled due to inclement weather, you will be notified on January 12, 2005. Please provide the best phone number to reach you in case of cancellation.

Name

Institution

Mailing Address

City

State

Zip Code

Phone*

Email

FAX

Registration with payment must be received by January 5, 2005:

- \$10.00 Pittsburgh Regional Chapter, MLA member
- \$15.00 Non-member
- \$ 8.00 Student (enrolled full-time in a library degree granting program-please include photocopy of student ID)

Total Payment Enclosed \$ _____

Pizza topping preference: How many slices can you eat? _____

- Vegetarian
- Plain
- Pepperoni
- The Works

Make checks payable to: Pittsburgh Chapter/MLA and mail to:

Charles B. Wessel
Health Sciences Library System
Falk Library of the Health Sciences
200 Scaife Hall
University of Pittsburgh
Pittsburgh, PA 15261

Phone: 412-648-8730
Email: cbw@pitt.edu

The Pittsburgh Theological Seminary is located on Highland Avenue in Pittsburgh's East Liberty/Highland Park neighborhood. Directions to the Campus are located at <www.pts.edu/visit.html>. A Campus map available at <www.barbourlibrary.org/images/Campus_map.jpg>.